



TREEHOUSE/STUDIO GANG



From meetings to receptions to lectures, host your next memorable event inside our elegant rooftop space. Our 1,500-square-foot venue can host up to 60 people. Glass walls on the north and south provide great natural lighting, plus amazing views of our lush prairie roof terrace and the surrounding city. Please visit our Peerspace page, where you can book this remarkable space. It has a comprehensive explanation of what is included: <https://www.peerspace.com/pages/listings/58488c0d7d05ad1600ce1167>

FEATURES AND AMENITIES

- On-site contact to help with day-of event logistics
- Private restrooms with designer fixture
- Skyline views
- Roof garden views
- Customizable lighting
- Oak flooring
- Elevator access
- ADA accessible
- Designer tables and chairs available for some event types (please message us)
- Private kitchen with 13-foot island bar: refrigerator, wine fridge, freezer, ice maker

FURNITURE INVENTORY

The Treehouse has a variety of furniture at your disposal. The below items (illustrated on the following page) are all included as part of the venue. Any other furniture would have to be rented or brought in:

INDOOR

30 x folding chair

4 x ballet table

6 sections (reconfigurable) sectional rope couch

4 x white band chairs (w/ 2 end tables)

OUTDOOR

4 x square table - these will probably be put away for the season

12 x outdoor chair - these will probably be put away for the season

2 x highboy – these can be used inside

Outdoor table set (4 x white chairs + coffee table)



30 x Folding Chair



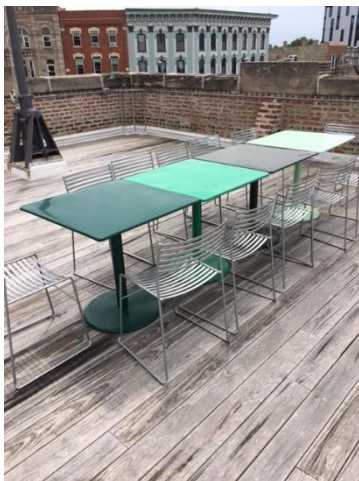
4 x white band chairs (w/ 2 end tables)



4 x Ballet Table



6 Sections (reconfigurable) Sectional Rope Couch



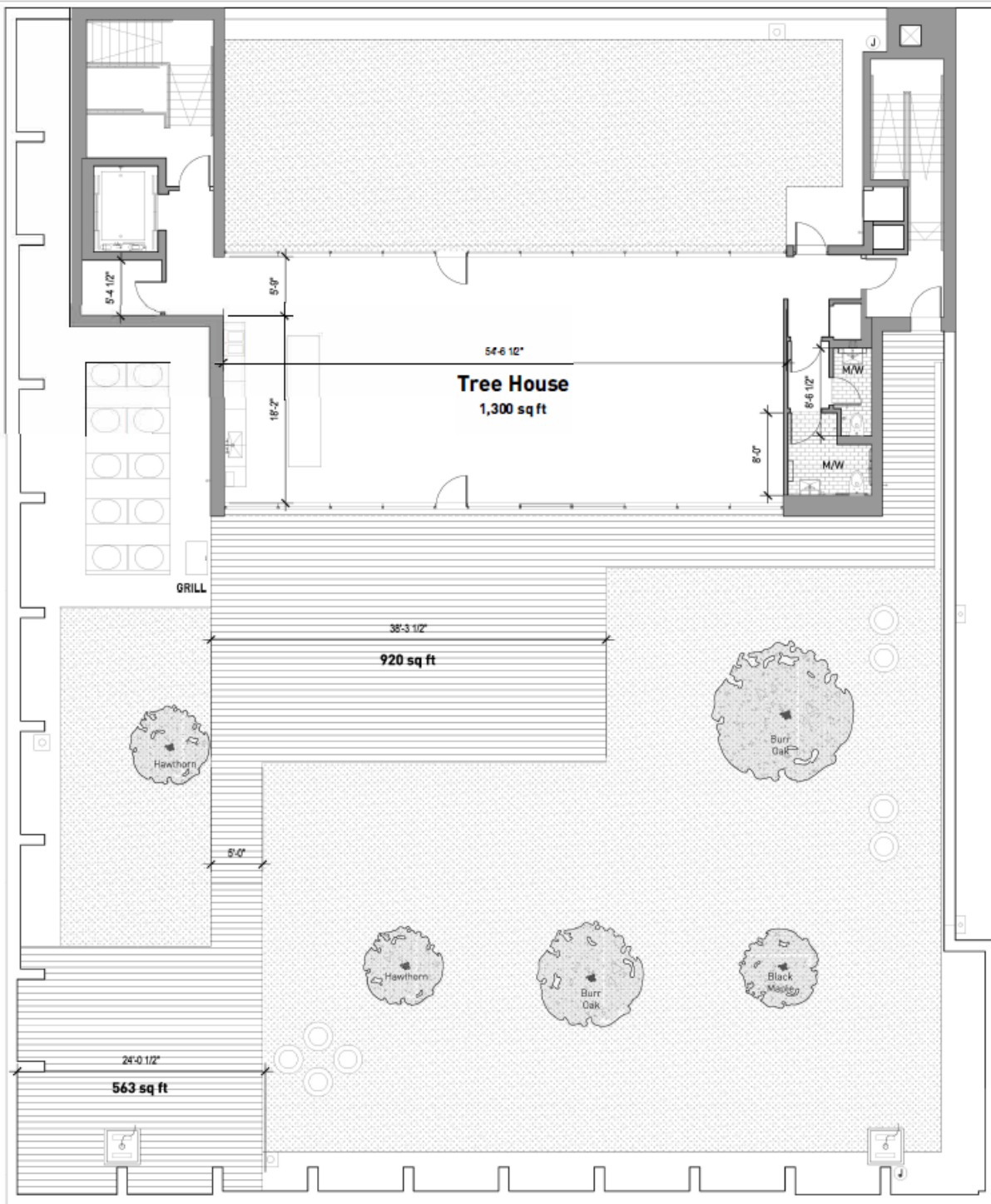
4 x Square table/12 x chair



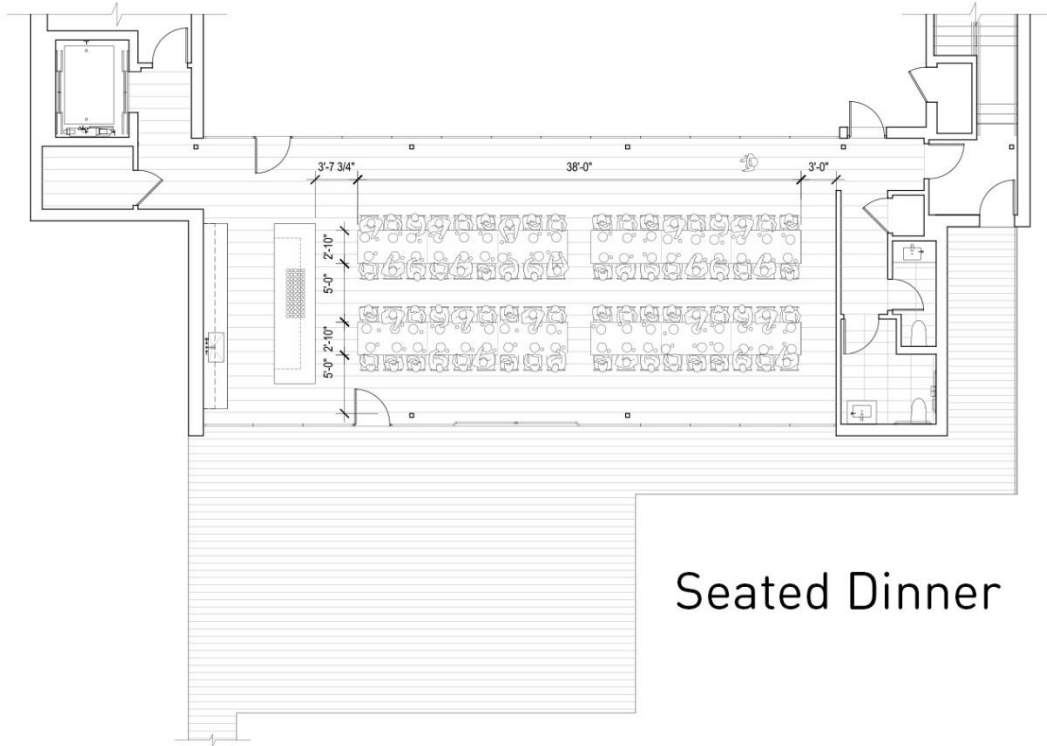
Outdoor table set (4 x white chairs + coffee table)



2 x highboys



TREEHOUSE/STUDIO GANG
 Floor Plan and Dimensions



Seated Dinner

